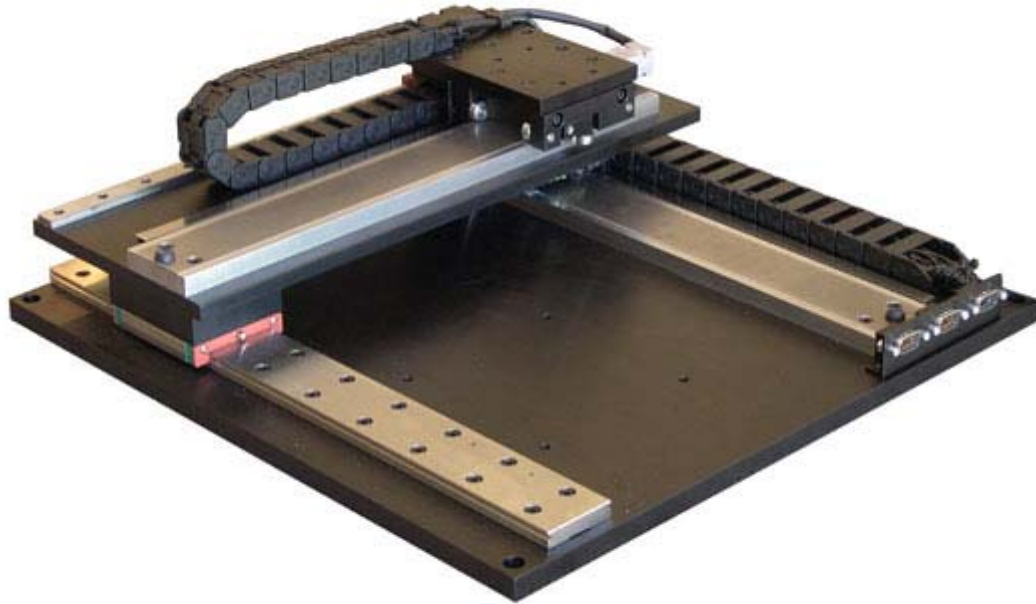


## Multi-Axis Positioning System



The Multi-Axis Positioning System is designed to allow direct coupling between the load and the drive motors. This feature eliminates backlash, allows for fast acceleration / deceleration, high speed operation while increasing the reliability.

These systems are available with linear stepping or linear three phase brushless motors.

Customized solutions can be provided upon request.

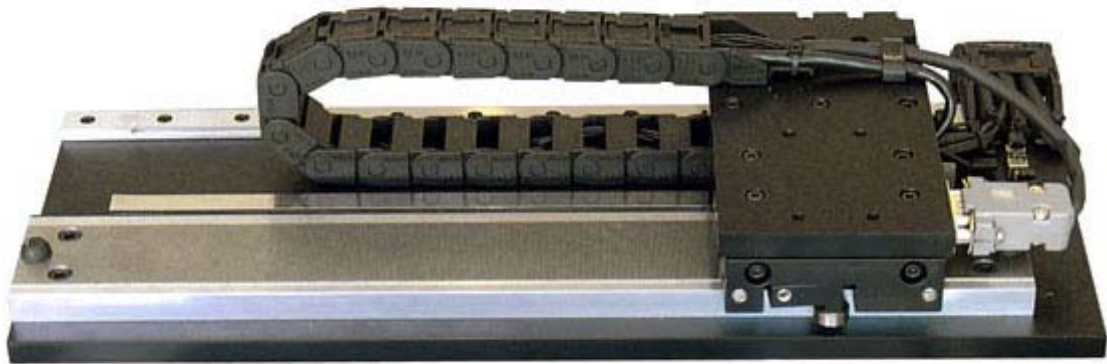
### Specifications

- Zero Backlash
- Long System Life
- Continuous Force in X and Y Directions
- Peak Force: Up to 15 lbs (66 N)
- Total Travel (typical): 10 inches (25 cm) by 10 inches (25 cm)
- Working Area (typical): 8 inches (20 cm) by 8 inches (20 cm)
- Open Loop Accuracy (typical) with Linear Stepper Motor: 0.001 inches / foot (85 microns / meter)
- Open Loop Repeatability (typical) with Linear Stepper Motor: 0.0004 inches / foot (33 microns / meter)
- Optional Incremental Encoder for Closed Loop Operation

**motiCont**

**MotiCont**  
22845 Ventura Blvd., Suite 11  
Woodland Hills, CA 91364, USA  
[www.MotiCont.com](http://www.MotiCont.com)

**Phone (888) 777-1826**  
+1 (818) 222-7928  
FAX +1 (818) 222-9580  
[MotiCont@MotiCont.com](mailto:MotiCont@MotiCont.com)



**Single-Axis Positioning System**

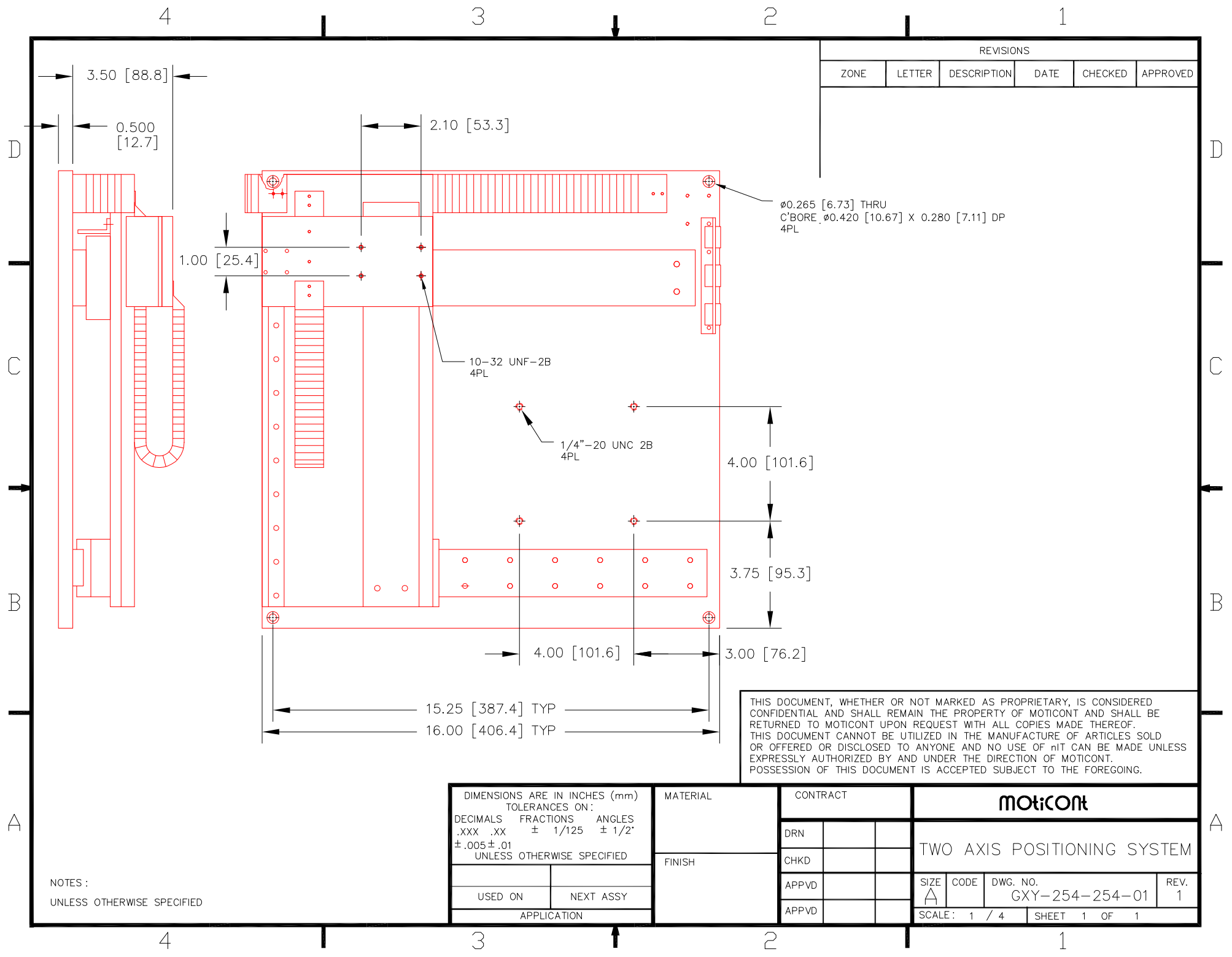


**Three-Axis Positioning System**

**motiCont**

**MotiCont**  
22845 Ventura Blvd., Suite 11  
Woodland Hills, CA 91364, USA  
[www.MotiCont.com](http://www.MotiCont.com)

**Phone (888) 777-1826**  
+1 (818) 222-7928  
FAX +1 (818) 222-9580  
[MotiCont@MotiCont.com](mailto:MotiCont@MotiCont.com)



| REVISIONS |        |             |      |         |          |
|-----------|--------|-------------|------|---------|----------|
| ZONE      | LETTER | DESCRIPTION | DATE | CHECKED | APPROVED |
|           |        |             |      |         |          |

THIS DOCUMENT, WHETHER OR NOT MARKED AS PROPRIETARY, IS CONSIDERED CONFIDENTIAL AND SHALL REMAIN THE PROPERTY OF MOTICONT AND SHALL BE RETURNED TO MOTICONT UPON REQUEST WITH ALL COPIES MADE THEREOF. THIS DOCUMENT CANNOT BE UTILIZED IN THE MANUFACTURE OF ARTICLES SOLD OR OFFERED OR DISCLOSED TO ANYONE AND NO USE OF IT CAN BE MADE UNLESS EXPRESSLY AUTHORIZED BY AND UNDER THE DIRECTION OF MOTICONT. POSSESSION OF THIS DOCUMENT IS ACCEPTED SUBJECT TO THE FOREGOING.

|   |           |
|---|-----------|
| DIMENSIONS ARE IN INCHES (mm)<br>TOLERANCES ON:<br>DECIMALS FRACTIONS ANGLES<br>.XXX .XX ± 1/125 ± 1/2'<br>± .005 ± .01<br>UNLESS OTHERWISE SPECIFIED |           |
| USED ON   | NEXT ASSY |
| APPLICATION   |           |

|          |          |
|----------|----------|
| MATERIAL | CONTRACT |
| FINISH   | DRN      |
|          | CHKD     |
|          | APPVD    |
|          | APPVD    |

|                             |      |                |      |
|-----------------------------|------|----------------|------|
| <b>motiCont</b>             |      |                |      |
| TWO AXIS POSITIONING SYSTEM |      |                |      |
| SIZE                        | CODE | DWG. NO.       | REV. |
| A                           |      | GXY-254-254-01 | 1    |
| SCALE: 1 / 4                |      | SHEET 1 OF 1   |      |

NOTES :  
UNLESS OTHERWISE SPECIFIED