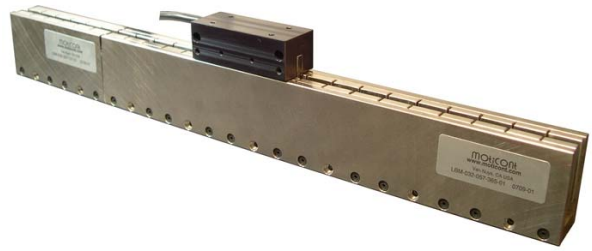


Linear Three Phase Brushless Ironless Motor

FORCER LBF-032-048-089-01			
PERFORMANCE			
Intermittent Force @ 10% Duty Cycle	29.4	lb	
	130.8	N	
Continuous Force @ 25 °C	9.3	lb	
	41.4	N	
Continuous Force @ Tmax	8.0	lb	
	35.6	N	
Continuous Power	38	W	
Motor Constant	1.5	lb/ W ^{0.5}	
	6.7	N/ W ^{0.5}	
ELECTRICAL SPECIFICATIONS			
	Wye	Delta	
Peak Current @ 10% Duty Cycle	6.8	11.6	A
Continuous Current @ Tmax	1.9	3.2	A
Force Constant	4.4	2.5	lb/A
	19.6	11.1	N/A
Back EMF	0.5	0.3	V/in/s
	19.6	11.1	V/m/s
Resistance @ 25 °C	8.3	2.8	Ohm
Inductance @ 1 KHz	2.9	1.0	mH



MECHANICAL SPECIFICATIONS		
Coil Assembly Mass	0.51	lb
	0.23	N
Magnetic Cogging Force	0	lb
	0	N
Magnetic Cogging Force	110	°C
Electrical Cycle Length	1.6	in
	40.6	mm
ELECTRICAL SPECIFICATIONS		
Thermal Time Constant	3	min
Thermal Resistance	2.24	°C/W

MAGNETIC TRACK LBM-032-057-XXX-01		
DIMENSIONS		
Width	1.25	in
	32	mm
Height	2.25	in
	57	mm
Length		
LBM-032-057-121-01	4.75	in
	121	mm
LBM-032-057-243-01	9.55	in
	243	mm
LBM-032-057-365-01	14.35	in
	365	mm
LBM-032-057-608-01	23.95	in
	608	mm
Mass		
All Models	0.58	lb/in
	10.3	Kg/m

xxx denotes the track length in mm. Available options are 121, 243, 365 and 608 mm.

Specifications are subject to change without notice.



MotiCont
 6901 Woodley Avenue
 Van Nuys, California 91406, USA
www.MotiCont.com

Phone (888) 785-1804
 +1 (818) 785-1800
 FAX +1 (818) 785-5713
MotiCont@MotiCont.com

